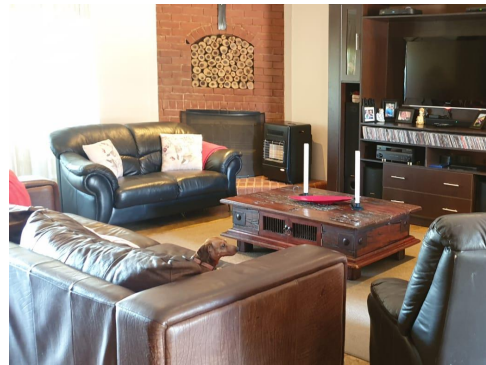


XANADU ECO PARK

R 2,000,000



A well-priced single storied, 3 bedroomed house in Xanadu Eco Estate, Hartbeespoort. This is a spacious, farm-style 3 bedroom house with a study, large living area and entertainment area. The spacious kitchen has enough cupboard space, a gas stove and granite tops with a pantry. The kitchen and living area form a large open plan space, with a fire place, creating a feeling of spaciousness. The main...



Louise Roux  
Sales Associate  
078 338 2752  
louise@remaxhorizon.co.za

ERF: 960m<sup>2</sup>  
Bedrooms: 4

Floor Size: 425m<sup>2</sup>  
Bathrooms: 2

Web Ref: RXDL-5249  
Garages: 2

RE/MAX Horizon - Hartbeespoortdam  
012 253 2996  
59 Scott Street Schoemansville 0216

remax.co.za  
Each Office Independently Owned and Operated